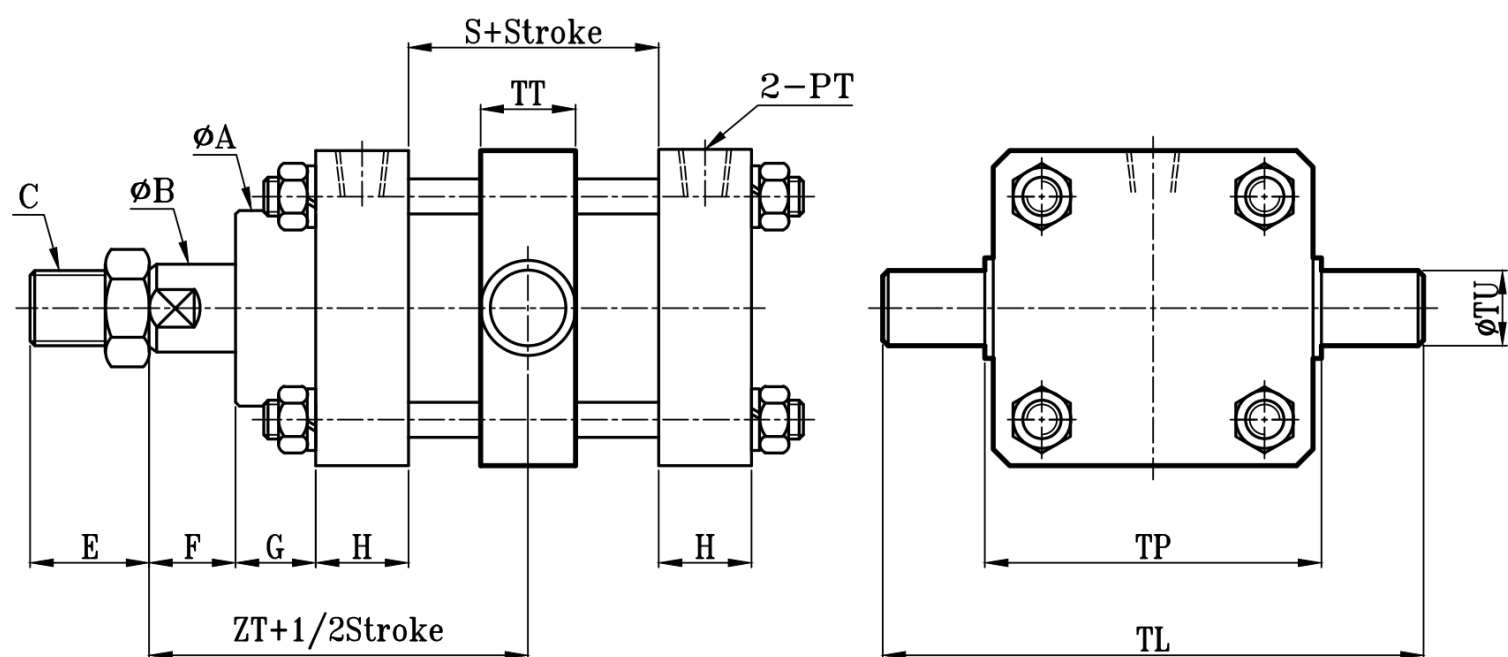
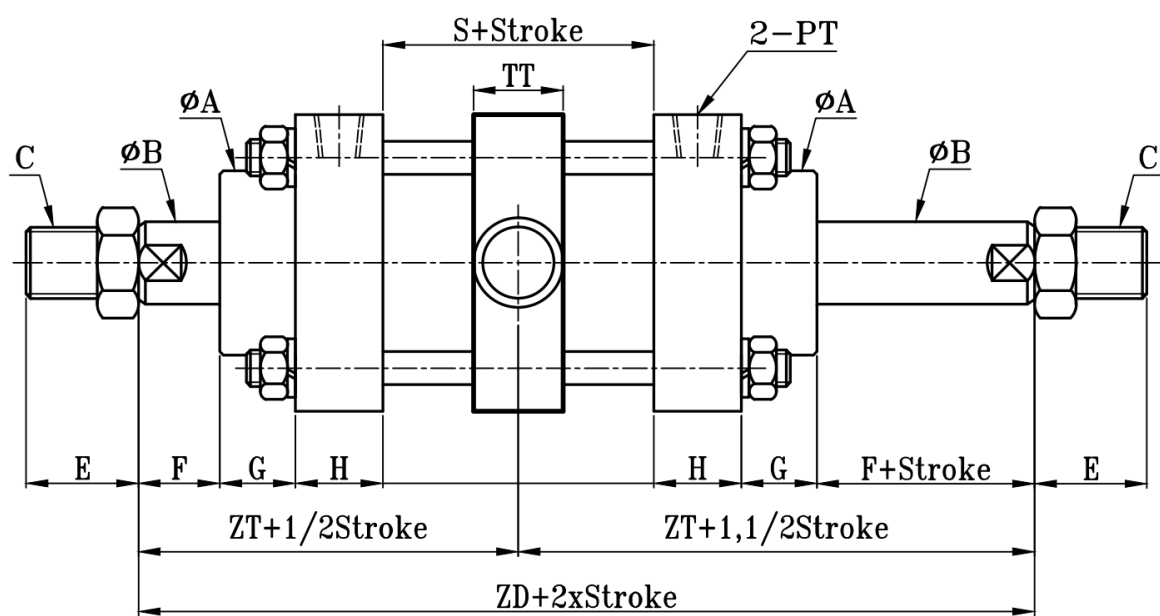


MOB:MOB+TC TYPE

方型轻油压缸TC板尺寸图 7Mpa Hydraulic Cylinders TC Dimensional Features



MOD:MOD+TC TYPE



MOB-MOD												TC TYPE			
缸径 BORE	ϕA	ϕB	C	E	F	G	H	PT	S	ZD	ZT	TL	TP	TT	ϕTU
$\phi 16$	21	10	M8xP1.25	20	11	15	20	1/8	45	137	68.5	67	43	14	12
$\phi 20$	25	12	M10xP1.25	25	11	15	20	1/8	45	137	68.5	72	48	14	12
$\phi 25$	25	14	M12xP1.25	25	11	15	20	1/8	45	137	68.5	72	48	14	12
$\phi 32$	30	16	M14xP1.5	30	15	15	25	1/4	50	160	80	90	60	18	16
$\phi 40$	40	20	M16xP1.5	30	15	20	25	3/8	50	170	85	110	70	22	20
$\phi 50$	45	20	M16xP1.5	30	15	20	30	3/8	55	185	92.5	130	80	27	25
$\phi 63$	55	25	M22xP1.5	35	20	25	30	3/8	55	205	102.5	155	95	32	30
$\phi 80$	62	30	M26xP1.5	40	20	30	35	1/2	60	230	115	183	113	37	35
$\phi 100$	75	35	M30xP1.5	40	20	30	35	1/2	75	245	122.5	213	133	42	40
$\phi 125$	85	50	M40xP2.0	50	25	30	40	1/2	75	265	132.5	260	160	47	45
$\phi 150$	105	60	M50xP2.0	60	30	30	50	3/4	85	305	152.5	317	197	52	50
$\phi 160$	105	60	M50xP2.0	60	30	30	50	3/4	85	305	152.5	317	197	52	50
$\phi 180$	130	80	M70xP2.0	80	30	35	50	3/4	95	325	162.5	388	238	57	55
$\phi 200$	130	80	M70xP2.0	80	30	35	50	3/4	95	325	162.5	388	238	57	55

注: ZT尺寸可按要求定做