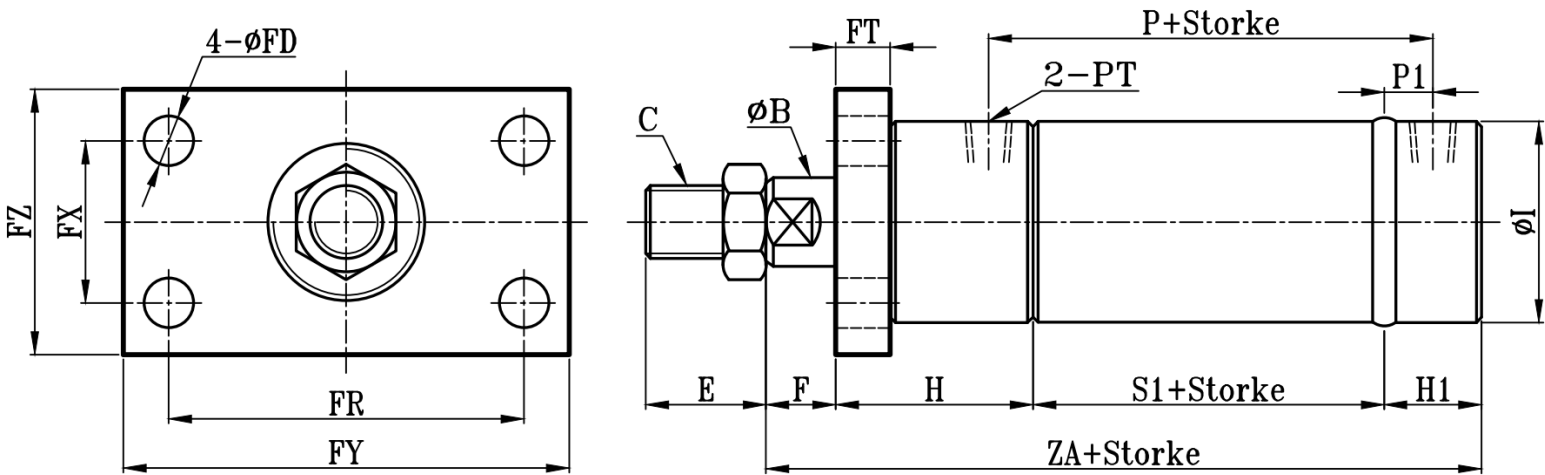
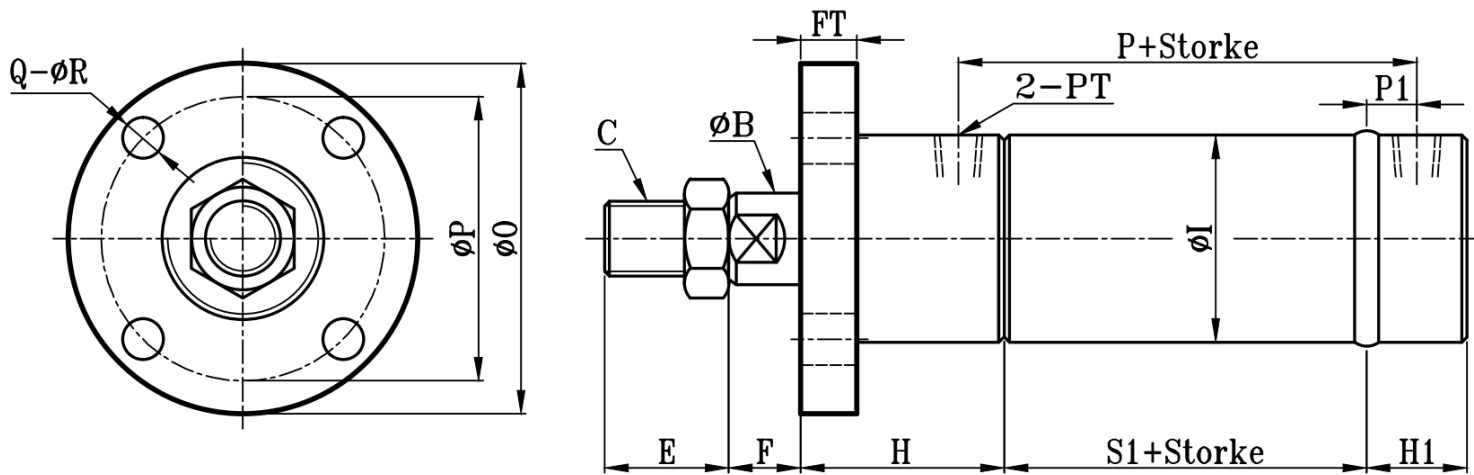


ROA:ROA(后平)+FA(方型) TYPE(后盖焊接式)

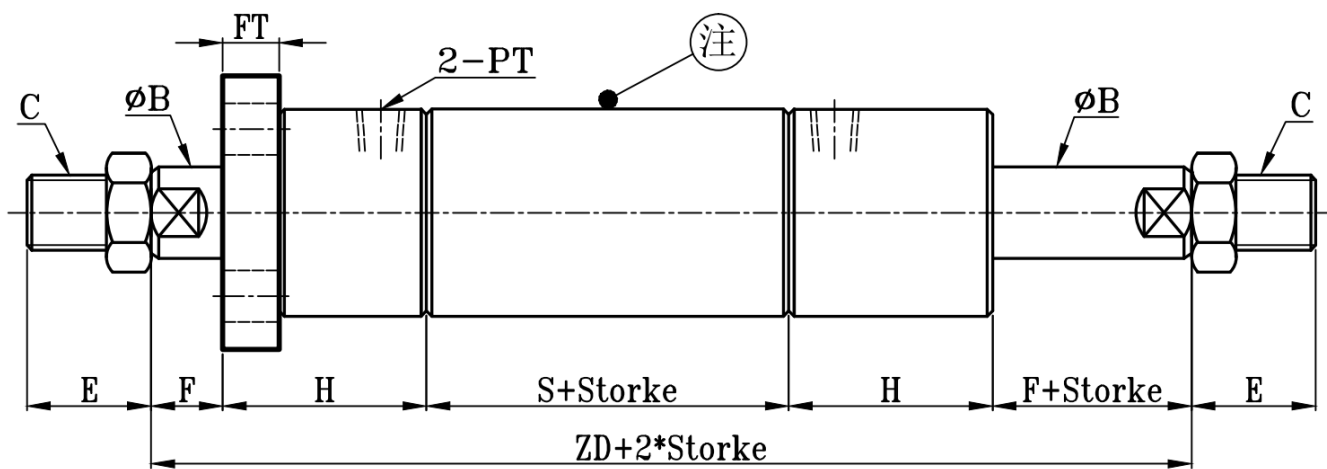
圆型中型油压缸FA板尺寸图 14Mpa RO Series FA Dimensional Features



ROA:ROA(后平)+FA(圆型) TYPE(后盖焊接式)



ROD:ROD+FA TYPE



注:感应油缸时, 不论是单轴还是双轴缸, 缸筒长度的选择均为双轴缸的缸筒长度

缸径 BORE	ROB-ROD TYPE															FA (方法兰)					FA (圆法兰)			
	ΦB	C	E	F	H1	H	ΦI	P	P1	PT	S1	S	ZA	ZD	FT	ΦFD	FR	FX	FY	FZ	Q	ΦR	Φ0	ΦP
Φ32	16	M14xP1.5	30	15	25	50	42	81	10.5	1/4	60	80	150	210	14	12	80	35	100	55	4	10	90	65
Φ40	20	M16xP1.5	30	15	25	50	50	84	12	3/8	60	80	150	210	14	12	93	50	115	70	4	12	100	75
Φ50	25	M22xP1.5	40	20	30	60	60	95	12	3/8	71	95	181	255	16	14	110	56	135	85	6	12	110	85
Φ63	35	M30xP1.5	40	20	30	60	73	95	12	3/8	71	95	181	255	16	16	126	68	155	95	6	14	130	101
Φ80	40	M30xP1.5	45	25	35	70	92	113	15	1/2	83	110	213	300	18	18	152	75	190	120	6	16	160	127
Φ100	50	M40xP2.0	50	25	35	70	114	123	15	1/2	93	120	223	310	20	20	180	100	220	140	6	18	185	150
Φ125	60	M50xP2.0	60	30	40	80	140	136	19	3/4	98	130	248	350	24	24	222	122	270	170	6	18	215	180
Φ140	70	M60xP2.0	70	30	40	80	160	136	19	3/4	98	130	248	350	29	26	250	145	300	195	6	20	240	205
Φ150	80	M70xP2.0	80	30	45	90	168	151	19	3/4	113	150	278	390	29	29	260	155	315	210	8	20	255	215
Φ160	80	M70xP2.0	80	30	45	90	178	151	19	3/4	113	150	278	390	29	29	270	165	325	220	8	20	270	230
Φ180	100	M90xP2.0	100	35	50	100	200	177	23.5	1	130	170	315	440	34	32	315	188	375	250	10	20	290	250
Φ200	100	M90xP2.0	100	35	50	100	228	177	23.5	1	130	170	315	440	39	35	355	207	425	275	10	20	315	274
Φ220	125	M100xP3.0	110	35	55	110	250	203	28	1 1/4	147	190	347	480	44	38	375	225	450	300	12	22	340	300
Φ250	125	M100xP3.0	110	35	55	110	276	203	28	1 1/4	147	190	347	480	49	41	410	250	490	330	12	22	365	325